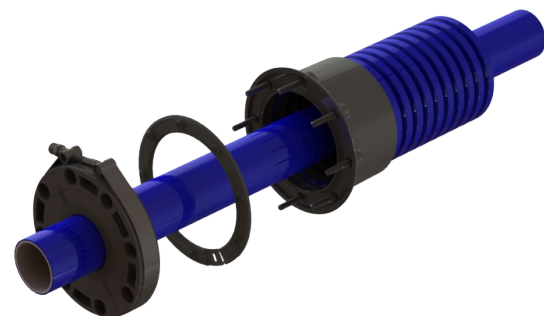


## NEW CONSTRUCTION FITTINGS



### PIPE TYPES

- Flexible
  - OPW FlexWorks
  - APT XP
  - Environ Gen 2
- FRP
- Rigid
  - Steel
  - Galv Rigid Conduit (GRC)
  - PVC Coated Rob Roy

### PIPE SIZES

- ¾", 1", 1.5", 1.75", 2", 3"

### MATERIAL

- Rigid Composite
- 4, 8 Bolt Standard Configuration

### FEATURES

- First and only serviceable new construction fitting
- Works on poly and FRP sumps
- No adhesives, no gluing, no waiting for cure times
- Rigid composite materials are fuel compatible
- Split to allow for easy install with end fitting pre-installed on pipe
- Minimal surface prep, faster install
- Installs in all weather conditions (wet included)
- Handles up to 20\* pipe angles
- 5-year warranty

**PATENT PENDING**

## CONTACT US

Trent Caster  
Western Regional Sales Manager  
[tcaster@sbravo.com](mailto:tcaster@sbravo.com)  
303.359.8862

Bob Hyatt  
Eastern Regional Sales Manager  
[bhyatt@sbravo.com](mailto:bhyatt@sbravo.com)  
239.888.6565

AK, AR, AZ, CA, CO, HI, ID, LA,  
MS, MT, NM, NV, OK, OR, WEST TN, TX, UT, WA, WY

AL, CT, FL, GA, IA, IL, IN, KS, KY, MA, ME, MI, MD, MO, NC, ND,  
NH, NJ, NY, OH, PA, SD, SC, EAST TN, VA, VT, WI, WV